

## *Wachovia Center*

Rock Hill, South Carolina



Suite 100 can be combined with Suite 210 (pictured below) as a single tenant space.



**AVAILABLE**  
SUITE 100

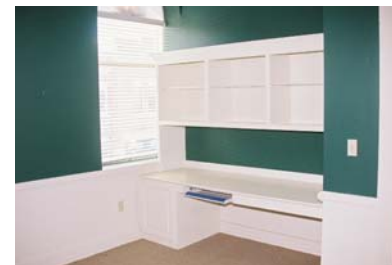
**1,500 SQUARE FEET**

**EXCELLENT OFFICE  
LOCATION**

**MAIN STREET ENTRANCE**

**AVAILABLE FOR  
IMMEDIATE OCCUPANCY**

**2 Offices / Boardroom  
Reception, copy & break areas  
High quality finishes**



**AVAILABLE**  
SUITE 210

**3,810 SQUARE FEET**

**EXCELLENT OFFICE  
LOCATION**

**HIGH QUALITY FINISHES  
CUSTOM MILLWORK**

**AVAILABLE FOR  
IMMEDIATE OCCUPANCY**

Suite 210 can be combined with Suite 100 (pictured above) as a single tenant space.

# AVAILABLE FOR LEASE



**R** ROGERS &  
ASSOCIATES

704/655-0331

[www.rogersassociates.net](http://www.rogersassociates.net)

## City Plaza

Rock Hill, South Carolina

**AVAILABLE**  
SUITE 100

**2,000 SQUARE FEET**  
**EXCELLENT**  
**FRONTDOOR LOCATION**

**AVAILABLE FOR**  
**IMMEDIATE OCCUPANCY**

**Located on the plaza**  
**Lots of windows**  
**Storage area**  
**Built-in shelving**  
**Great finishes**



## City Plaza

Rock Hill, South Carolina

**AVAILABLE**  
SUITE 140

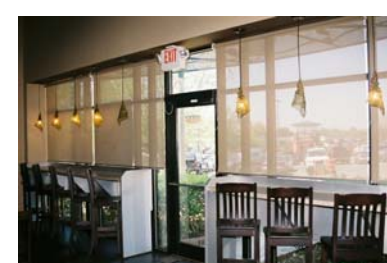
**3,645 SQUARE FEET**

**EXCELLENT RESTAURANT**  
**LOCATION**

**FULLY FURNISHED**

**AVAILABLE FOR**  
**IMMEDIATE OCCUPANCY**

**Located on the plaza**  
**Lots of windows**  
**Storage & Office area**  
**Outdoor seating**



**AVAILABLE**  
SUITE 410

**1,209 SQUARE FEET**  
**4th FLOOR OFFICE SPACE**

**AVAILABLE FOR**  
**IMMEDIATE OCCUPANCY**

**HIGH LEVEL OF**  
**FINISHES**



**R** ROGERS &  
ASSOCIATES

**Rogers & Associates**  
**8015 West Kenton Circle**  
**Suite 150**  
**Huntersville, NC 28078**

**Tel: (704) 655-0331**  
**Fax: (704) 655-0339**

[drogers@rogersassociates.net](mailto:drogers@rogersassociates.net)

For more information, please visit [www.rogersassociates.net](http://www.rogersassociates.net)